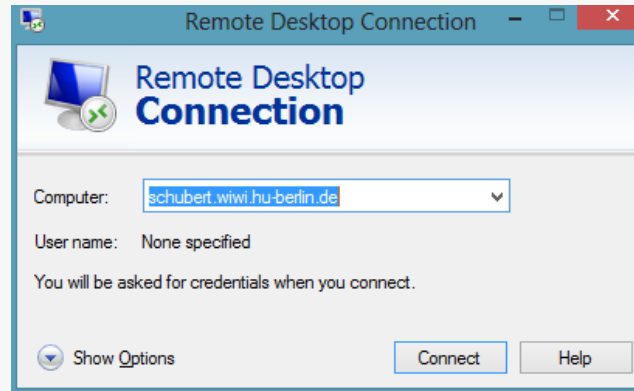


Access to Terminal-Server

- How to connect to a server / terminal

1. Open Remote Desktop Connection (pre installed on Windows / available for MacOs X)
2. enter the name of the server in the <Computer> field



3. Now you will be asked for your “username“ and “password“
4. Check that you <Log on to> LEQR, if selectable
5. Enter the credentials you find on the last page of this document, with your username written as: “RDC\<username>”