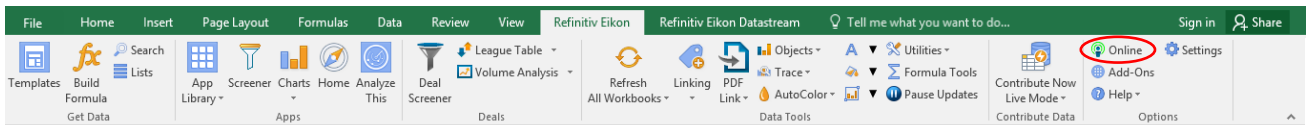


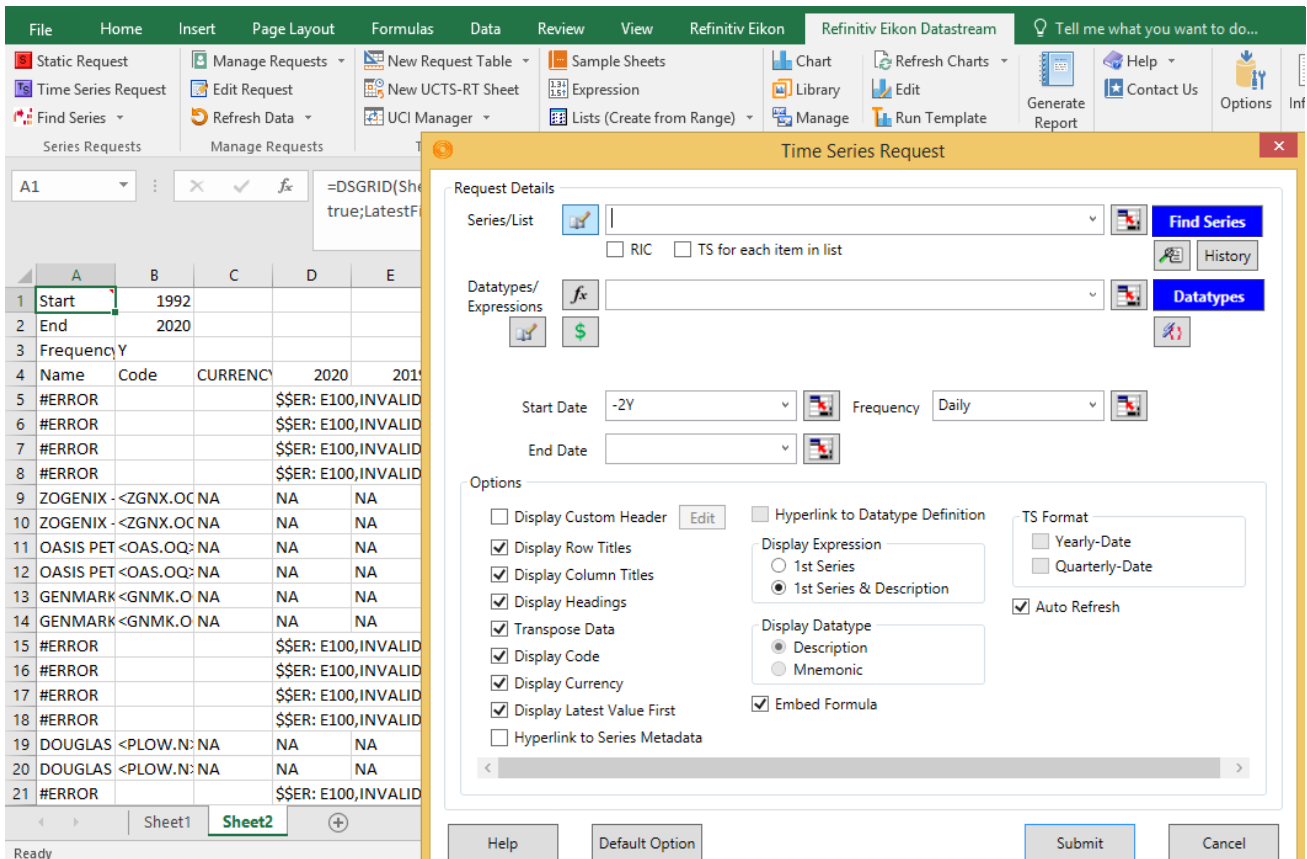
# Download Time Series Data using Refinitiv Eikon Datastream Excel add-in

A list of firm tickers – ideally the EIKON tickers (RIC), but for example ISIN codes usually work as well – and a list of variables should be prepared before the downloading.

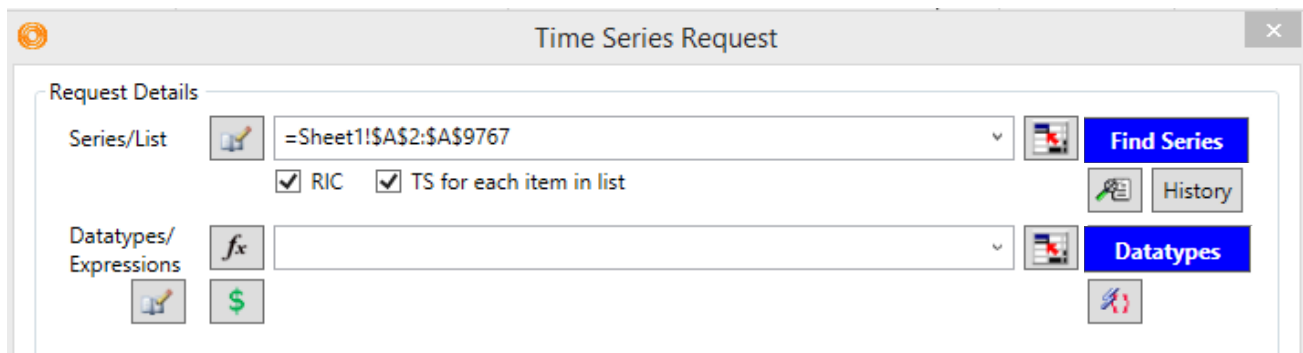
**Step 1.** Open Excel and ensure the “Refinitiv Eikon” add-in is signed in as in the ribbon.



**Step 2.** Go to the “Refinitiv Eikon Datastream” tab and open “Time Series Request”.

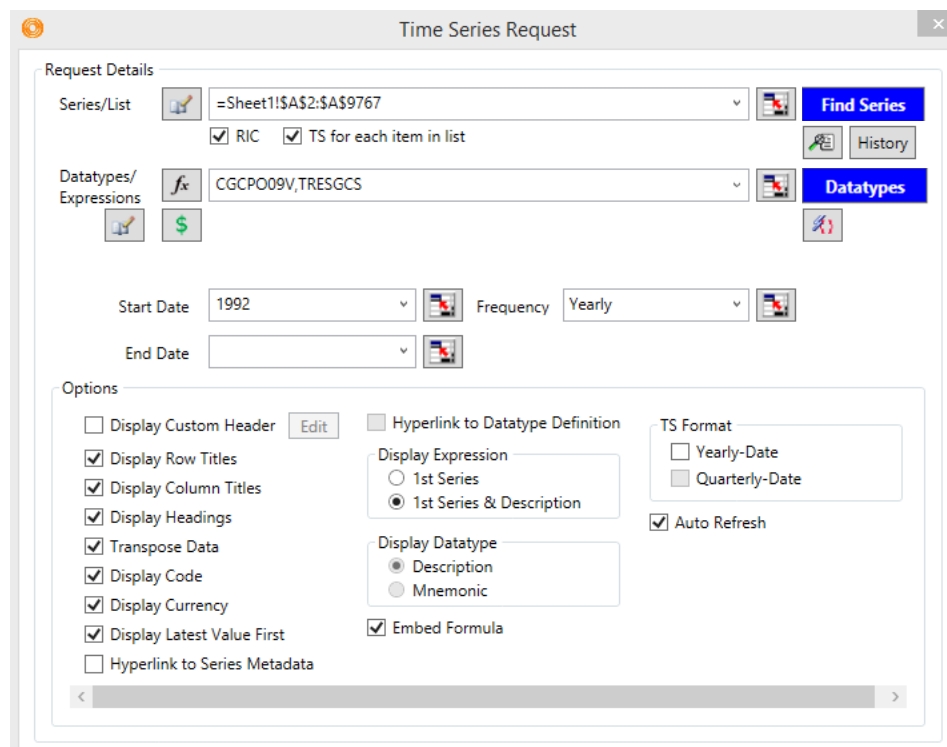


**Step 3.** In the 'Series/List' field, input your list of tickers. It's not very clear what the checkbox "RIC" and "TS for each item in list" do, but it is recommended to tick them.

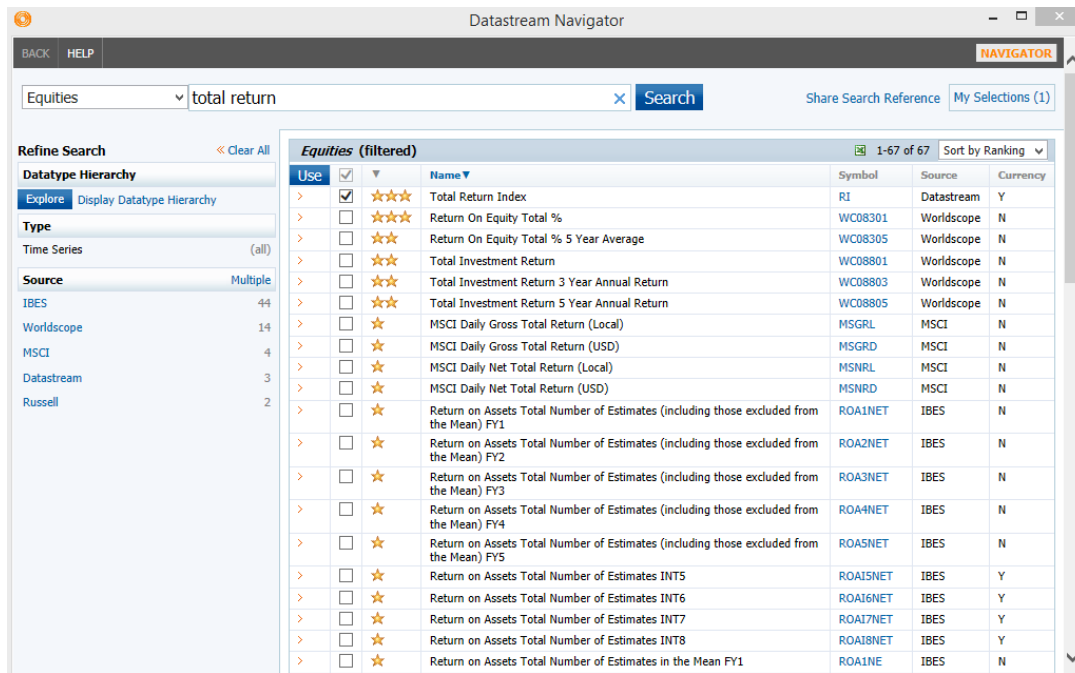


**Step 4.** In 'Datatypes' field, input your list of variable in their coding form.

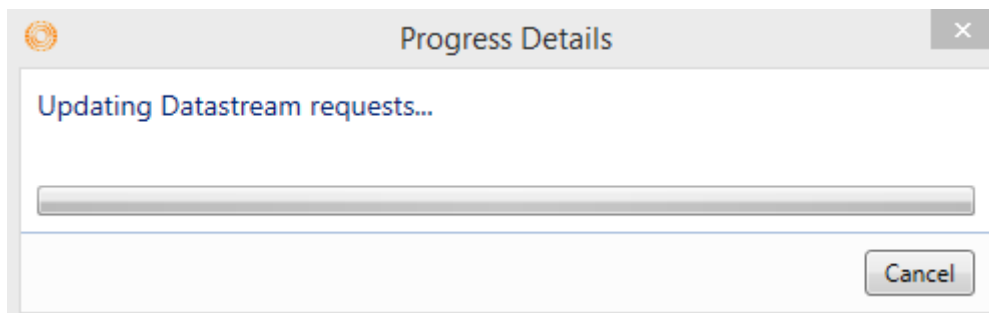
Note: Datastream allows you to submit multiple variables at a time, but don't be too greedy. It typically doesn't crash but may take a lot of time to process. It also appears the first request in your session takes longer than subsequent ones.



**Hint:** In case you are not aware of your expressions' symbol (for the tickers of your companies and/or the variables), use the blue "Datatypes" button, which redirects you to the "Datastream Navigator":



**Step 5.** Check the other formatting options and submit the request. If everything is done correctly, a processing window pop up:



The output below is for reference only. The data table you downloaded may or may not look alike, depending on your format settings.

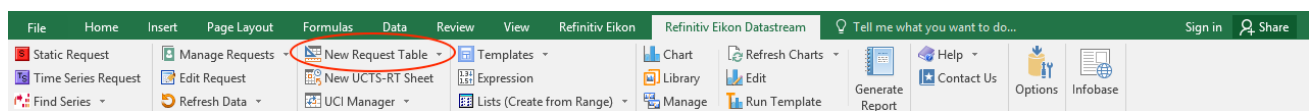
=DSGRID(Sheet1!\$A\$2:\$A\$9767;"CGCPO09V;TRESGCS";"1992";"";"Y";"RowHeader=true;TimeSeriesList=true;ColHeader=true;Heading=true;Transpose=true;Code=true;Curr=true;LatestFirstValue=true;DispSeriesDescription=false;YearlyTSFormat=false;QuarterlyTSFormat=false;Sym=RIC")

	A	B	C	D	E	F	G	H	I	J	K	L	M	N	O	P	Q	R	S	T	U
1	Start	1992																			
2	End	2020																			
3	Frequency	Y																			
4	Name	Code	CURRENCY	2020	2019	2018	2017	2016	2015	2014	2013	2012	2011	2010	2009	2008	2007	2006	2005	2004	2003
5	#ERROR			#\$SER: E100,INVALID CODE OR EXPRESSION ENTERED																	
6	#ERROR			#\$SER: E100,INVALID CODE OR EXPRESSION ENTERED																	
7	#ERROR			#\$SER: E100,INVALID CODE OR EXPRESSION ENTERED																	
8	#ERROR			#\$SER: E100,INVALID CODE OR EXPRESSION ENTERED																	
9	ZOGENIX	<ZGNX.OC	NA	NA	N	N	NA	NA	NA	NA	NA	NA	NA	NA	NA	NA	NA	NA	NA	NA	NA
10	ZOGENIX	<ZGNX.OC	NA	NA		59.96	48.23	NA	NA	NA	NA	NA	NA	NA	NA	NA	NA	NA	NA	NA	NA
11	OASIS PET	<OAS.OQ	NA	NA	Y	Y	Y	Y	Y	Y	Y	Y	Y	Y	NA	NA	NA	NA	NA	NA	NA
12	OASIS PET	<OAS.OQ	NA	NA		47.31	41.44	39.87	33.42	33.68	31.5	27.96	19.37	22.17	NA	NA	NA	NA	NA	NA	NA
13	GENMARK	<GNMK.O	NA	NA	N	N	NA	NA	NA	NA	NA	NA	NA	NA	NA	NA	NA	NA	NA	NA	NA
14	GENMARK	<GNMK.O	NA	NA		30.63	33.32	30.07	NA	NA	NA	NA	NA	NA	NA	NA	NA	NA	NA	NA	NA
15	#ERROR			#\$SER: E100,INVALID CODE OR EXPRESSION ENTERED																	
16	#ERROR			#\$SER: E100,INVALID CODE OR EXPRESSION ENTERED																	
17	#ERROR			#\$SER: E100,INVALID CODE OR EXPRESSION ENTERED																	
18	#ERROR			#\$SER: E100,INVALID CODE OR EXPRESSION ENTERED																	

## Alternative – Datastream Request Table

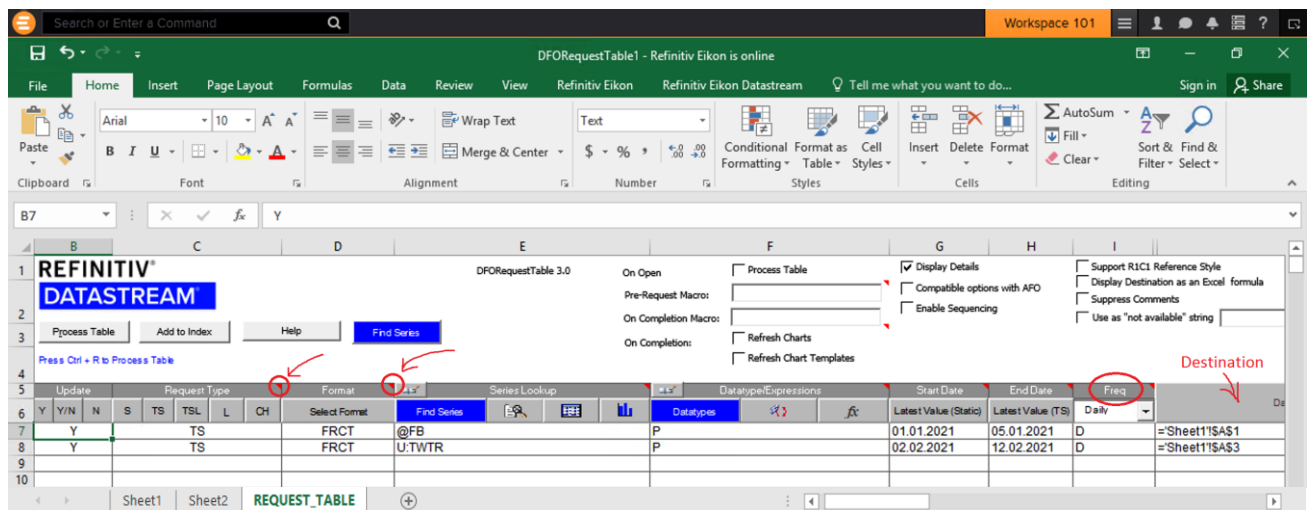
If you want to send multiple requests at the same time, you can also use an extra request table where all your queries will be processed one after another. This is for example also useful, if you have diverging dates for each company of interest (e.g. useful in context of M&A deals and stock price analysis). For this, follow these instructions:

**Step 1.** Click on “New Request Table” in the tool bar.



**Step 2.** A new table will pop up where you can enter your queries. Fill in all cells up to “Freq” – the field “Destination” is optional (if left free, a default is chosen which usually means a new Sheet for each request). The other cells on the right will be filled automatically after you have processed the table.

**Hint:** For explanations and abbreviations see the red flags in each corner of the variable fields in the header bar. You can also search for ticker and variable symbols via the Datastream Navigator as before (click on the blue “Find Series” and “Datatypes” buttons).



**Step 3.** Finally, click on “Process Table” and obtain your results.

Note: It is possible to process all requests multiple times, but be aware that the data will be overwritten without warning, if you do not change your destination. Furthermore, old data can remain unchanged, for example, if the number of dates is smaller than the original one. This can lead to quite a mess, so keep an eye on it.